

We kindly ask you to book your own accommodation.

We suggest the following hotels:

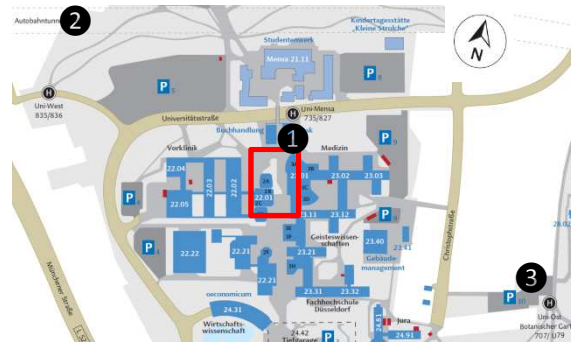
**HK Hotel Düsseldorf City**  
Varnhagenstraße 134  
40225 Düsseldorf  
[www.hk-hotels-duesseldorf.de](http://www.hk-hotels-duesseldorf.de)

**Ibis Hotel Düsseldorf Hbf**  
Konrad-Adenauer-Platz 14  
40210 Düsseldorf  
[www.ibis.com](http://www.ibis.com)

**A & O Düsseldorf Hauptbahnhof**  
Corneliusstraße 9-11  
40215 Düsseldorf  
[www.aohostels.com/de/duesseldorf](http://www.aohostels.com/de/duesseldorf)

**Günnewig Hotel Esplanade**  
Fürstenplatz 17  
40215 Düsseldorf  
[www.guennewig.de/hotel-esplanade](http://www.guennewig.de/hotel-esplanade)

**Special hotel offers at**  
<http://business.duesseldorf-tourismus.de/en/congress/gasl>



1 Building 23.01 2 Tunnel A46 3 U99, Tram 707

**Venue**

Heinrich-Heine University  
Building 23.01,  
Lecture hall 3D and foyer  
Universitätsstraße 1  
40225 Düsseldorf



Link to map of campus

**Arriving by car:**

From the east the university is best reached from *Hildener Kreuz* (A 3/ A 46) via *Düsseldorf-Süd* junction (A 46). Leave the A 46 in the tunnel (exit *Zentrum/ Universität*). Turn left at the first traffic lights into *UniversitätsstraÙ* which runs through the campus.

From the west the university is best reached from *Neuss-Süd* junction where the A 46 and A 57 merge. After the Fleher Rhine bridge take the exit *Bilk/ Zentrum/ Hafen/ Benrath*. Stay in the right-hand lane and follow the signs to *Benrath/ Universität*.

**Arriving by public transport:**

Düsseldorf main station is connected to all international long-distance train routes. Both the U99 and the 707 tram go from there directly to the university (*Uni-Ost / Botanischer Garten*)

The university is also on the route of the following busses: 735, 827, 835 and 836.



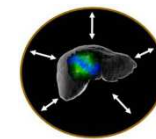
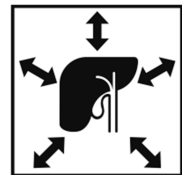
**GASL Annual Meeting 2016  
in Düsseldorf**

**January 22-23, 2016**



GERMAN ASSOCIATION FOR THE STUDY OF THE LIVER

**and GASL Workshop  
January 21-22, 2016**



SFB974  
Kommunikation und  
Systemrelevanz  
bei Leberschädigung und  
Regeneration



Klinik für Gastroenterologie, Hepatologie  
und Infektiologie  
Leber- und Infektionszentrum Düsseldorf

**Invitation and  
Tentative Program**

## GASL Annual Meeting 2016

in Düsseldorf

Jan. 22-23, 2016

Overview of Scientific Program Topics

1. Fibrogenesis and Nonparenchymal Cells
2. Clinical Hepatology
3. Metabolism/Transport
4. Tumors/Liver Surgery/Transplantation
5. Viral Hepatitis and Immunology

Each session includes a poster visit, lectures and a poster discussion.

### President:

Prof. Dr. med. Dieter Häussinger  
Professor and Chairman

Department of Internal Medicine  
Clinic of Gastroenterology,  
Hepatology and Infectious Diseases  
Coordinator of the Collaborative Research  
Center SFB 974

### Coordination:

Prof. Dr. med. Verena Keitel  
Dr. rer. nat. Radmila Feldmann  
Phone: +49(0)211-8117443  
Fax: +49(0)211-8104847  
Email: [gasl@med.uni-duesseldorf.de](mailto:gasl@med.uni-duesseldorf.de)

### GASL President

Prof. Dr. med. Dieter Häussinger

### Venue

University Hospital Düsseldorf  
Heinrich-Heine University  
Universitätsstraße 1, 40225 Düsseldorf  
Building 23.01, lecture hall 3D and foyer

### Start

Friday, January 22, 2016 12:30 pm

### End

Saturday, January 23, 2016 2:30 pm

### Dinner Event

Rheinterrasse Düsseldorf  
Friday, January 22, 2016 7:30 pm  
Cost: 50,- Euro

### Abstract Submission

Electronic Submission  
July 3 – August 20, 2015  
[www.gasl.de](http://www.gasl.de)

### Registration

Online Registration  
[www.gasl.de](http://www.gasl.de)

### Registration Fee

Online Registration  
until December 31, 2015  
**65,- Euro**  
Late Registration / on site  
**80,- Euro**

### Students

**free admission**



## GASL Research Workshop

“Communication and System Relevance in Liver Damage and Regeneration”

together with SFB 974

**January 21-22, 2016**

### Official workshop language:

English

### Registration Falk Workshop:

[www.falkfoundation.com](http://www.falkfoundation.com)

Following the Workshop the Annual Meeting of the German Association for the Study of the Liver (GASL) will take place, January 22-23, 2016.

