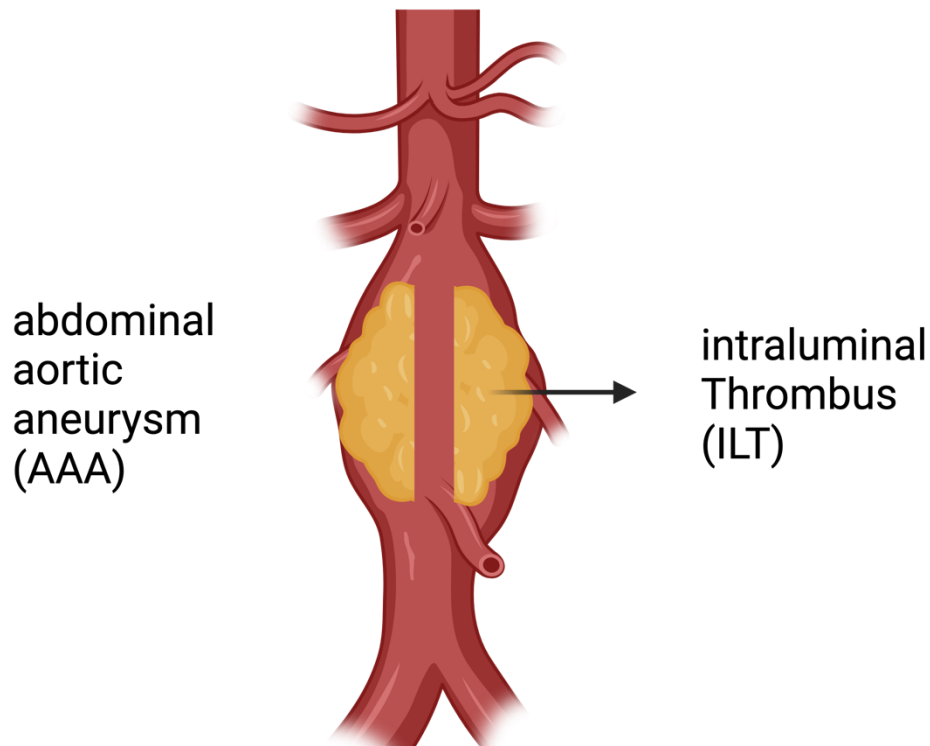


ILT in AAA

Intraluminal thrombus (ILT) is a disease-specific characteristic of abdominal aortic aneurysm (AAA). A prerequisite for its formation is the activation of platelets, which provides a possible therapeutic target for this disease. The Aortic Lesions Research Group aims to clarify mechanistically the role of ILT and to derive possible therapeutic intervention strategies. Of particular interest is the cellular interplay that enables the progression of ILT and thus has disease-specific value.



Intraluminal thrombus (ILT) is present in the majority of patients with abdominal aortic aneurysm (AAA). It represents a biologically active compartment that could be destructive to the underlying AAA wall. From a biomechanical point of view, the ILT appears to be more stabilizing. Its role in pathogenesis has not yet been fully elucidated. The Aortic Lesions Research Group is trying to clarify the role of ILT in pathogenesis in clinical and experimental approaches. (Created with BioRender).